

Flyhack

The key to control fly cycle from **Adult fly**



**No Sugar /Jaggery
Needed**



**Quick & Easy
to apply**



**Long-lasting
power**



**Controls Adult
Fly population**



Instant response



**Aggressive double
performance**



Low resistance



**Economic &
Effective to
farmers**

INSTANT ACTION

DIRECTIONS FOR USE

Scatter granules onto desired locations. Scatter granules evenly on dry surfaces, avoid placing Flyhack in litter. Reapply as Flyhack is consumed to maintain control. Start applications at the beginning of the season to help keep house fly populations manageable. Avoid application to windy areas as flies will avoid these areas; apply Flyhack in several locations, concentrating on areas where house flies are a problem. Do not add the sugar.

STORAGE AND DISPOSAL

Do not contaminate water, food or feed by storage or disposal.

Pesticide Storage : Store in a cool, dry area away from heat or open flame and inaccessible to children and pets.

Pesticide Disposal : Wastes resulting from use of this product may be disposed of on site or at an approved waste disposal facility. If these wastes cannot be disposed of according to label instructions, contact your State Pesticide or Environmental Control Agency.

DIRECTIONS



Flies can fly at 0-15°C, and can only feed at above 20°C. Flies are especially active at 30-35°C, and cease to act due to overheating at 35-40°C



It is recommended that the Flyhack be put during fly foraging periods: between 5 and 7 am, and between 17 and 19 pm, for the best results.



Avoid using in dark and damp corners. Avoid direct exposure to sunlight.



Evenly spread out when using, do not pile up into a valley.



The efficacy of this product can last for more than 15 days when using correctly.

Marketed by :



NutriBiotech Pvt Ltd

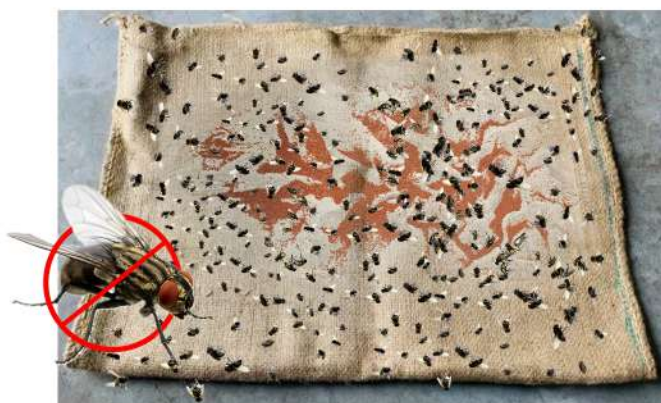
Registered Office:

No. 11, VOC Street, Ponmalaipatti,
Trichy - 620 004, Tamilnadu, India.

Mobile: +91 97901 55126

Email: gosanutribiotech@gmail.com

Website: www.gosa.co.in



WET THE SACK & SPREAD Flyhack