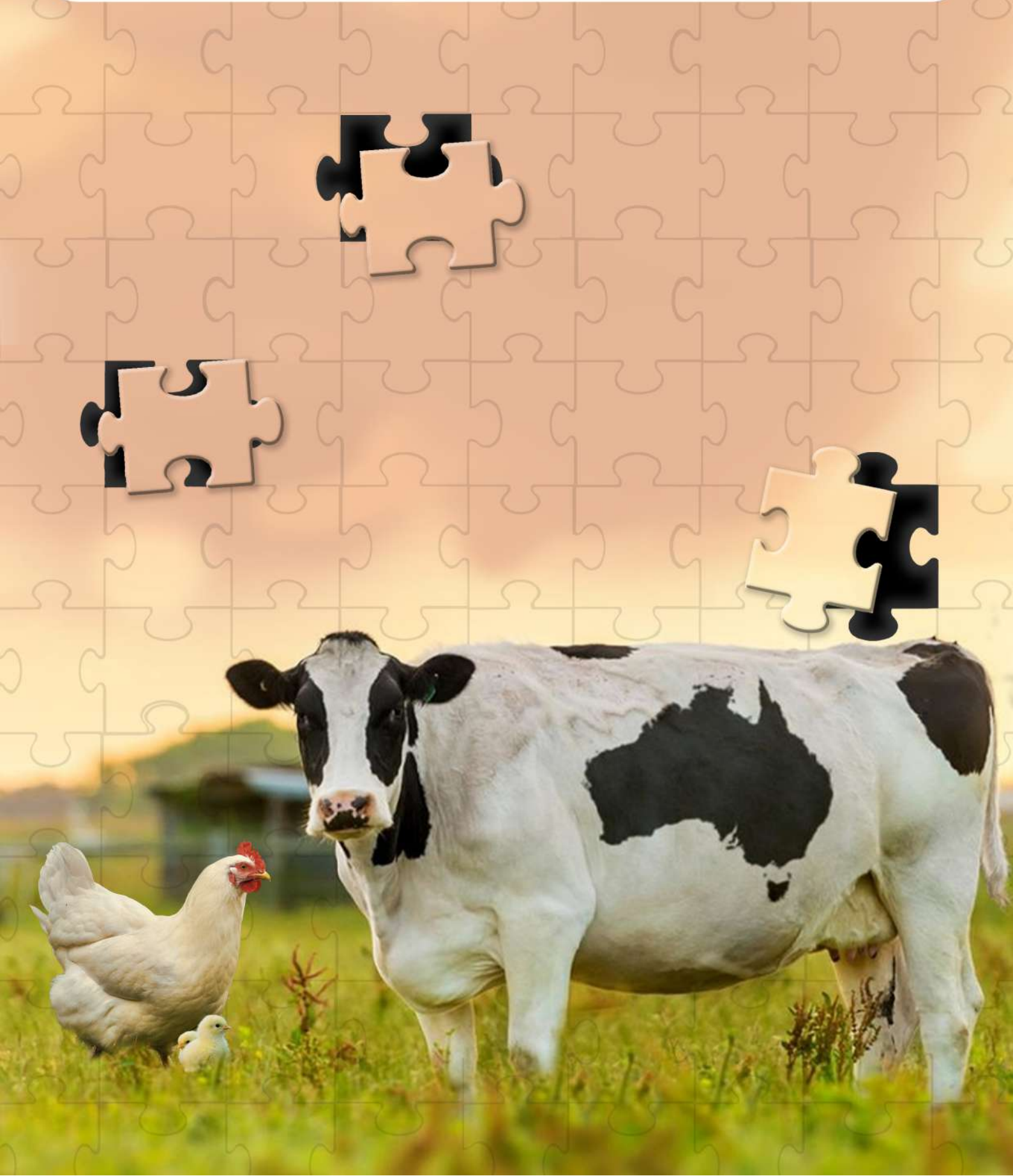


# **POWERZYME PS** powder

**A Special blend of Enzymes and Probiotics**



## Description

Powerzyme is a special enzyme mixture designed for the purpose of Low Cost Feed Formula. Wheat, Broken Rice, Jowar, Ragi, Rice Polish, Sunflower Extract, Rapeseed Extract, Soya bean Extract, DORB, Gaur seed, Sal Seed are the most common ingredients in the present day feed. These ingredients contain viscosity creating substances (NSPs) like Limit dextrin,  $\beta$ -Glucan, Pectin, Fibres etc. During digestion they cause viscosity in the intestine and reduce the digestive action. They also contain Anti-Nutritional compounds like Phytic Acid. Powerzyme contains enzymes for digestion of Limit dextrin,  $\beta$ -Glucan, Pectin, Fibres and other NSPs and Phytic Acid. It increases the bioavailability of energy and also increases the mineral assimilation.

Powerzyme improves FCR and body weight gain in Broilers, improves egg production and prevents leg weakness in layers, broilers and breeders. The special Probiotics of Powerzyme protect the gut environment. Powerzyme is essential for preparation of Low Cost Feed Formula.

## Feature & Benefits

- Faster growth and more body weight.
- Improves productive value of feed and better feed conversion ratio.
- Complete phosphorous and mineral assimilation.
- Improves bio-availability of energy.
- Reduces fibre excretion and wet droppings.
- Increases egg production and maintains good shell thickness.
- Flexibility in feed formulation.
- Reduces phosphorous deficiency related sickness.
- It permits higher fibre content in the feed formula.
- It permits Low Cost Feed Formulation.
- Reduction in feed intake of the birds and releases additional energy.

## Composition

Each 100 gm Contains

Particulars	Specifications
Cellulase	1,000 IU
Amylase	1,000 IU
Acid Protease	4,000 IU
Xylanase	7,000 IU
Beta Glucanase	4,500 IU
Pectinase	3,000 IU
Mannanase	3,000 IU
Lipase	100 IU
Phytase	5,000 IU
<b>Probiotics</b>	<b>CFU / Grams</b>
Bacillus Subtilis	5X10 <sup>9</sup> CFU/gm
Bacillus Polymyxa	3X10 <sup>9</sup> CFU/gm
Lactobacillus SPP	5X10 <sup>9</sup> CFU/gm

## Dosage:

200 – 500 grams per Ton of Feed for milking cow and beef cow.

200 – 500 grams per Ton of Feed for Broiler & Layer.

**Available pack size : 1 Kg, 5 Kg & 25 Kg**

## Not for human, Cat & Dog

The product is free from Chloramphenicol, Nitrofurans, Antibiotics, Melamine, By product of swine/bovine & other genetically modified organism.

**Aquatic supplement  
Store in Cool & Dry place**

Manufactured & Marketed by :

  
**NutriBiotech Pvt Ltd**

**Registered Office:**

No. 11, VOC Street, Ponnalaipatti,  
Trichy - 620 004, Tamilnadu, India.

Mobile: +91 97901 55126

Email: gosanutribiotech@gmail.com

Website: www.gosa.co.in